

# Early Childhood Family Education

WINTER/SPRING 2017



*Fun, affordable  
classes for parents  
& their children ages  
Birth to Kindergarten  
Enrollment*



## ESPAÑOL

Para información en español sobre Early Childhood Family Education (Educación Familiar para la Niñez Temprana), por favor visite la página 4-5.

## HMOOB

Rau cov lus Hmong txog Early Childhood Family Education, thov mus saib nplooj ntawv 5.

## SOOMAALI

Wixii warbixin Soomaali ah ee ku saabsan barnaamijka waxbarashada Dhalaanka, Fadlan ka eego boga 6 aad.

**A program of Minneapolis  
Early Childhood Education**

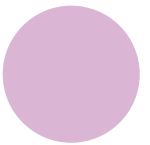


**MINNEAPOLIS  
PUBLIC SCHOOLS**  
Urban Education. Global Citizens.

# About ECFE/Contents

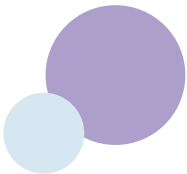


**Early Childhood Family Education** offers classes, programs and services for families with young children from birth to kindergarten age. Our early childhood teacher partners with you to offer meaningful and fun learning opportunities for your child. At our classes, parents and children participate together in group time and activities, followed by a parent discussion facilitated by a licensed parent educator, who brings research-based parenting information into the conversation.



Classes are offered at a variety of times and in various formats: semesters, half semester, and four-week sessions for one-and-a-half to two hours weekly, during days, evenings and Saturdays. We have nine different sites across the city. Fees are based on income, and no one is turned away for inability to pay.

We know that you are your child's first and most important teacher. We work to strengthen all families by offering information, support and resources around children's learning and growth. We are always growing to meet the changing needs of our community. As a result of our recently completed Community Needs Assessment, we are offering exciting new opportunities for 2017. Look for the **NEW** symbol to see our changes.



In addition to the classes outlined in this brochure, the Early Childhood Education department provides a variety of resources and opportunities for young children and their families to prepare them for kindergarten and beyond. Contact us at **612.668.2127**, or visit us on the web for more information about all the opportunities we provide: [ece.mpls.k12.mn.us](http://ece.mpls.k12.mn.us). ●

## Table of Contents

ECFE Services/Advisory Councils .....	3
ECFE Class Descriptions .....	4-12
ECFE Class Schedule by Location .....	13-15
Class Application Information .....	16
Policies/Sliding Fee Scale .....	17
Locations Map .....	18
Application Form .....	19

### ECFE Administrative Office

2410 Girard Ave. N., Minneapolis, MN 55411  
Phone: 612.668.2127 • Fax: 612.668.2135



## Screen your child

Early Childhood Screening is a free program that checks your child's health and development. **Screening at 3** helps you get connected to early learning and community programs that support your child's learning. At the screening appointment, you will work with staff to develop a school readiness plan that will support you as you prepare your child to be ready for school.

**Please contact us for an appointment when your child turns three years old by calling 612.668.3715.**

# All Early Childhood Family Education Services

## Home Visits

Do you have questions about parenting, your child's development or how to help your child be ready for kindergarten? We will send an Early Childhood professional to answer questions and share activities for you and your child to do together. For more information, call **612.668.2144**.

## NEW | Parent Networks

Invite 8-12 of your friends to your home for a two-hour personalized parent education session. Together with an Early Childhood professional, you will choose a date, time and topic for your group. The educator will arrive at your home with materials and facilitate a discussion. Fee is \$10 per participant. Call **612.668.2144** to schedule a consultation.

## NEW | Personal Phone Consultation

Have a question about parenting? Wonder what normal development looks like? Need a new strategy for handling difficult behavior? We offer 30-minute phone consultations with an Early Childhood professional. Call **612.668.2144** to schedule your consultation.

## Volunteer and support Early Childhood Family Education: Join an advisory council!

Our Parent Advisory Councils in north and south Minneapolis support ECFE by: increasing awareness of Early Childhood Family Education, raising money for classrooms, advocating for ECFE in the community and at the legislature, coordinating fun and informative events for families, and providing feedback on classes.

Meetings are once a month. Go to [ecfesouthpac.com](http://ecfesouthpac.com) or [facebook.com/ecfenorthpac](https://www.facebook.com/ecfenorthpac) to learn more.

The Early Childhood Education Council assists leadership in developing, planning and monitoring birth to five-year-old programming for ECFE, MPS High 5, Teen Parenting Services and Screening. Call **612.668.2127** to learn more.



## Alphabet Soup Preschool

*2017-2018 preschool  
for three-year-olds*

Our preschool is held in the new state-of-the-art early childhood classroom at Webster Elementary School, 425 5th St. NE. This collaborative program of Early Childhood Family Education and Early Childhood Special Education is taught by licensed teachers who use a curriculum based on state and district standards. *Children must be three years old by Sept. 1, 2017.*

Classes are held Tuesday, Wednesday and Thursday mornings from 8:05-10:35 a.m. The parent education class focuses on preparing children for kindergarten and occurs every other Tuesday. Tuition is based on a sliding fee scale—see page 17.

**Register starting Feb. 1, 2017  
at [ecfe.mpls.k12.mn.us](http://ecfe.mpls.k12.mn.us) or  
call 612.668.2127.**

# Linguistically & Culturally Specific Classes

## ¿Hablas español? ¡Ofrecemos clases en Español!

Early Childhood Family Education (Educación Familiar para la Niñez Temprana) ofrece clases, programas y servicios para familias con niños pequeños, desde el nacimiento hasta la edad de kindergarten. Nos asociamos con ustedes para ofrecer oportunidades de aprendizaje significativo y divertido para sus hijos. En nuestras clases, los padres y los hijos participan juntos en un tiempo de grupo y actividades, seguido por una conversación con los padres facilitada por un educador de padres licenciado, quien trae información proveniente de investigaciones sobre la crianza de niños.

Estas clases en español son ofrecidas en cuatro establecimientos en la ciudad, dos horas una vez por semana, y durante un semestre. Los pagos se basan en los ingresos y no rechazamos a nadie por no poder pagar. (La tarifa variable se encuentra en la página 17.) Contamos con transporte limitado si fuera necesario.

Además de las clases enumeradas a continuación, también ofrecemos Early Childhood Screening (Evaluación de la niñez temprana) para niños de tres a cinco años de edad, visitas a los hogares, consultas telefónicas y redes de padres (para educar a grupos de padres en sus hogares).

**Si desean obtener más información o para registrarse, por favor llamen al 612.290.2547.**

### Amigos Especiales Latinos

*Edades: Inscripción desde el nacimiento hasta el Kindergarten*

Ya sea que su hijo esté o no esté recibiendo servicios de intervención temprana, todos son bienvenidos. Este entorno de aprendizaje inclusivo permitirá que los niños de todos los niveles jueguen y aprendan juntos. Los padres discutirán diversos temas sobre la crianza de los hijos con el grupo.

Wilder 19 Wednesdays  
Starts Feb 1 9:30-11:30 am

Además de esto, los padres se encuentran invitados a unirse a uno de nuestros dos **Consejos Asesores de Padres (PAC)** para mejorarla programación y hacer conexiones con otras familias. Averigüe más visitando: [ecfe.mpls.k12.mn.us/Parent\\_News](http://ecfe.mpls.k12.mn.us/Parent_News).

### Aventuras Latinas en la Crianza

*Edades: Inscripción desde el nacimiento hasta el Kindergarten*

Pase un tiempo de calidad con su niño participando en actividades de aprendizaje divertidas. La educación para padres se centrará en el desarrollo del niño, preparación para la escuela, temperamento, comportamiento recator, y las relaciones entre hermanos.

Sheridan 19 Tuesdays  
Starts Jan 31 10 am-12 pm  
1-3 pm  
5-7 pm

Wilder 19 Wednesdays  
Starts Feb 1 4-6 pm

Wilder 18 Thursdays  
Starts Feb 2 1-3 pm

Wilder 17 Fridays  
Starts Feb 3 9:30-11:30 am



### El Bebé Contento e Inteligente

*Edades de 18-30 meses*

Se Registra en este oportunidad para considerar cuidadosamente sus interacciones con su bebé. Usted recibirá un aparato para recodar las interacciones verbales entre usted y su bebé. Después usted analizará los resultados con un maestro de padres. Este clase enfocará en creciendo sus habilidades y apoyando el desarrollo del lenguaje de su bebé.

Cityview 16 Mondays  
Starts Feb 6 9:30-11:30 am

### Listo para Preescolar

*Edades: 36 meses desde el nacimiento hasta el Kindergarten*

Los niños descubrirán un mundo de aprendizaje y amistad en nuestro clase preescolar. El discusión de padres va a enfocar en el desarrollo de niño, temperamento, disciplina, la preparación para la escuela, y todas las cosas relevantes en la vida de un niño de preescolar.

Wilder 19 Wednesdays  
Starts Feb 1 1-3 pm

## Niños Latinos Pequeñitos

Edades de 12-24 meses

*Niños y padres pasan tiempo juntos y practican la separación*

¿Están listos para conocer nuevos amigos, pasar tiempo juntos jugando y aprendiendo, y practicar a pasar tiempo separados? Nosotros vamos a apoyarlos a usted y a su niño mientras aprenden a separarse de una manera respetuosa y flexible. Los padres discutirán el desarrollo del niño, temperamento, rutinas, rectores de comportamiento y separación.

Wilder 18 Thursdays  
Starts Feb 2 9:30-11:30 am

## Preescolar Latino en Ciencia, Tecnología, Ingeniería y Matemáticas (STEM)

Edades: Inscripción desde los 36 meses hasta el kindergarten

*El niño debe haber cumplido 3 años hasta el 1° de septiembre del 2016.*

¿A su niño le gusta construir y tratar de averiguar cómo funcionan las cosas? Las actividades de nuestra clase van a fomentar las destrezas para resolver problemas y explorar cómo funcionan las cosas. Los temas de educación de los padres se enfocarán en las maneras en las que los padres pueden apoyar a su futuro ingeniero. Trabajamos en la creación de planes de lecciones de calidad en colaboración con el programa de MPS denominado STEM, para ayudar a los estudiantes a alcanzar los estándares de matemáticas y ciencias de Minnesota.

Wilder 19 Tuesdays  
Starts Jan 31 2-4 pm

## Koj puas hais lub Hmoob? Peb muaj ib chav kawm ntawv qhia lub Hmoob!

Early Childhood Family Education muaj chav kawm ntawv, cov kev pab thiab cov kev pab cuam rau cov tsev neeg ua muaj menyuam yaus thaum yug mus txog kindergarten hnuv nyoog. Peb koom tes nrog koj kom tsim nuj thiab muab kev lom zem kawm rau koj tus menyuam.

Nyob rau ntawm peb cov chav kawm ntawv, cov niam txiv thiab cov menyuam koom ua ke ib pawg ib lub sij hawm thiab ua ub no ua ke, tom qab ntawd niam txiv sib tham los ntawm ib tug niam txiv muaj ntawv tso cai, uas them kev tshawb fawb raws li niam txiv cov lus qhia rau hauv qhov kev sib tham.

Hmoob chav kawm ntawv hais lus yog ob teev ib asthiv rau peb hli kev kawm. Cov nqi kawm yog xam los ntawm cov nyiaj khwv tau thiab tsis muaj ib tug neeg ua peb tsis txais vim them tsis tau. (Tus nqi qhia yog nyob rau nplooj ntawv 17). Muaj tsheb npav thauj mus los yog xav tau.

Nyob rau hauv chav kawm ntawv uas muaj npe haus qab no, peb kuj muaj Early Childhood Screening rau cov menyuam peb xyoos mus txog tsib xyoos, ntsib tom tsev, sib tham xov tooj, thiab niam txiv kev txua lus (mus kawm ntawv ua ib pawg ntawm cov niam txiv tsev).

Ntxiv mus, caw cov niam txiv tuaj koom peb ib lub **Parent Advisory Councils (PAC)** los mus txhim khu kev pab cuam thiab txuas lus nrog lwm cov tsev neeg. Xav paub ntau ntxiv mus saib: [ecfe.mpls.k12.mn.us/Parent\\_News](http://ecfe.mpls.k12.mn.us/Parent_News).

**Yog xav paub ntxiv los sis cuv npe, hu rau: 612.692.0518.**



## Hmoob Niam Txiv

*Cov muaj hnuv nyoog: Thaum yug-kindergarten cuv npe kawm*

Siv sij hawm nrog koj tus menyuam koom kev lom zem, kev kawm ua ub no. Niam txiv kev kawm ntawv yuav ua kom paub tseeb rau menyuam kev loj hlob, npaj txhij rau tsev kawm ntawv, kev siab luv, kev coj tus cwj pwm, thiab sib raug zoo ntawm kwv tij nus muag.

Hmong Academy 19 Wednesdays  
Starts Feb 1 5-7 pm

# Linguistically & Culturally Specific Classes

## Miyaad ku hadashaa luuqadaha afafka Soomaaliga, Oromoda ama Amhariga? Waxaanu bixineynaa Fasalo ku baxa luqadahaas!

Barnaamijka waxbarashada Qoysaska iyo Caruurta, iyo adeegyada loogu talo galay qoysaska haysta Caruurta yar yar oo da'dooda tahay markey dhashaan ilaa ay ka soo garayaan Dugsiga xanaanada ilmaha. Waan kugu caawinaynaa si aan kuugu helno waxbarasho tayo leh oo xiiso u leh ilmahaaga. Fasaladeena Waalidka iyo ilmahiisa waxay uga qeybgalayaan si wada jir ah xiliga howlaha kooxeynta, waxaa intaas raacaya wada xaajood waalidka baraha, iyo waalidka u hogaansan howlaha tacliinta, lana wadaagaya cilmi barista ku saleysan tabaradad waalidiinta.

Fasalda ku baxa luqadaha Somaliga/Oromoda/Amharicga waxay ka baxayaan labo goobood oo qura oo ka mid ah degmada Minneapolis. Saacadaha waxay noqon doonaan labo saac oo qura isbuuciiba oo sanadka barkiisa ah. Gunada labixiyo fasalada waxay ku saleysan yihiin hadba sida uu dhaqliga kuu soo galo, oo aad u bixinkarto. (Lacagaha kala Sareeya ka eeg бага). Gaadiidka waxaad u helaynaa hadba sida ay baahida tahay.

Waxaa intaa dheer inay bixiyaan fasalada hoos ku xusan waxaa kaloo bixinaa barnaamijka Waxbarashada Caruurta Qiimeeya ilmaha Da'dooda tahay Sadex jir-ilaa Shan-jirka, Booqashada guriga ah, la, gula talinayo taleefonka, iyo waalidiin u mideysan (si wax loogu baro waalidiinta guryahooda).

**Kala soo xiriir waxii diiwaangalinta ku saabsan:**  
**Somaliga: 612.290.7631 • Oromoda/Amhariga: 612.290.8413**

## Xal u raadinta Walidiinta Oromoda/Amhariga ee Afrikada Bariga

*Diiwaan galinta xiliga dhasho ilaa uu ka gaaro dugsiga xanaanada*

Barumssi kun warrootta ijoollee afaan ingiliizii fi adaan kan saanii kan ni taneef waaee gudissa daa'immaa Minnesota kan walqabatedha. IJoon marii warraa ijoollee kun waa'ee gudina daa'immaa, mana barumssafi qophaa'u, qalbif adaba akasumas ariirro obbolan qabatan irratti. Afaan oromo fi tajajili jira. Caalaati hubachuf Atale Worku bilbila 612.290.8413 quunnamaa.

የወላጆች ወይይት የሚያቀርብ ስልጅን ልማት ለማረጋገጥ ዝግጁ መሆናቸውን፤ ስልጅን ልማት ለማረጋገጥ የሚያስፈልጉትን መረጃዎች ላይና እንዲሁም ከአሁን ጀምሮ ከወንድሞቻቸው ጋር ያላቸውን ግንኙነት በተመለከተ ላይ ያተኮራል። ተጨማሪ መረጃ ከፈለጉ ወይንም አታለሉት ወርቁን በ 612.668.2148 ወይም በ 612.290.8413 ስልክ ቁጥር ይደውሉ

### Oromoda/Amhariga

Wilder	19 Wednesdays
Feb 1	9-11 am

Wilder	16 Mondays
Feb 6	9-11 am

Wilder	16 Mondays
Feb 6	11:30 am-1:30 pm

### Oromoda

Mona Moede	17 Fridays
Feb 3	9:30-11:30 am

Intaa waxaa dheer in la idinku casuumay waalidiinta inay ku biiraan labada gole mid ka mid ah **Golaha Waalidiinta Dugsiga (PAC)**. Si kor loogu qado Barnaamijyada la xiriirka qoysaska fadlan wixii dheraad ah kala xiriir shabakada: [ecfe.mpls.k12.mn.us/Parent\\_News](http://ecfe.mpls.k12.mn.us/Parent_News).

## Waalidiinta Soomaalida ee ka faa'iideysanaya Fasalka Afrikada Bari (East African)

*Diiwaan galinta xiliga uu dhasho cunugu ilaa uu ka gaaro dugsiga xanaanada*

Kaalay arag oo la wadaag ilmahaaga fasalada uu wax ku barto kuna ciyaaro. Ilmahu wey iska sii ciyaarayaan inta uu walidku ku guda jiro barashada Kobcinta ilmaha, iyo Xiriirka u diyaarinta Dugsiga, Dhaqanka Dabeecadaha iyo Wanaajinta anshaxa, iyo walaaleynta.

Wilder	19 Wednesdays
Feb 1	11:30 am-1:30 pm

Mona Moede	18 Thursdays
Feb 2	9:30-11:30 am



# Infant Classes (0-11 Months)



## Infant Classes (0-11 Months)

Congratulations on the birth of your baby! You are your child's first and most important teacher. Join a licensed parent educator and other parents to discuss the joys and challenges of adding a new member to your family.

*For a complimentary visit to an infant class, call 612.668.2127.*

### New Parent Connection

*Ages 0-4 months—Half-Semester*

*Non-Separating—child and parent together for entire class*

This is a great place to start in ECFE. We'll discuss topics such as sleep, eating patterns, calming techniques and adjustments to parenting. You will learn infant massage techniques and play activities for young babies.

Longfellow	9 Tuesdays
Starts Jan 31	1:30-3 pm
Sheridan	9 Wednesdays
Starts Feb 1	1-2:30 pm
Longfellow	8 Saturdays
Starts Feb 4	11 am-12:30 pm
Longfellow	10 Tuesdays
Starts Apr 11	1:30-3 pm
Sheridan	10 Wednesdays
Starts Apr 12	1-2:30 pm
Longfellow	8 Saturdays
Starts Apr 15	11 am-12:30 pm

### How much do classes cost?

ECFE classes are priced on a sliding fee schedule based on family income. See page 17.

### Incredible Infants

*Non-Separating—child and parent together for entire class*

Experience music and play activities to enhance your infant's development. We will discuss many topics of interest including sleep, nutrition, child development, temperament, adjustments to parenting and safety.

#### Full-Semester classes

*Ages 5-11 months*

Sheridan	19 Wednesdays
Starts Feb 1	3:30-5 pm
Longfellow	19 Wednesdays
Starts Feb 1	11 am-12:30 pm
Longfellow	18 Thursdays
Starts Feb 2	3:30-5 pm

#### Half-Semester classes

*Ages 0-11 months*

Wilder	9 Tuesdays
Starts Jan 31	5:30-7 pm
Wilder	10 Tuesdays
Starts Apr 11	5:30-7 pm

#### Half-Semester classes

*Ages 5-11 months*

Longfellow	8 Saturdays
Starts Feb 4	9-10:30 am
Longfellow	8 Saturdays
Starts Apr 15	9-10:30 am

### Infants & Yoga

*Ages 1-8 months*

*Half-Semester Class*

*Non-Separating—child and parent together for entire class*

Build trust, confidence and understanding of your baby's communication through yoga. Parent discussion will focus on topics relevant to life with a new baby.

Tuttle	8 Fridays
Starts Feb 3	10-11:30 am
Tuttle	9 Fridays
Starts Apr 14	10-11:30 am



# Toddlers & Twos Classes (11-36 Months)



## Early Ones

Ages 11-18 months  
*Non-Separating*

Children and parents enjoy time together singing, playing and learning. The early childhood staff engages the children in planned activities while parents gather nearby in the same room for parent discussion on topics like child development, temperament, guiding behavior, sleep and nutrition.

Wilder 19 Tuesdays  
Starts Jan 31 3:30-5 pm

Tuttle 19 Wednesdays  
Starts Feb 1 8:30-10 am

Longfellow 19 Wednesdays  
Starts Feb 1 3-4:30 pm

## Early Ones

Ages 11-18 months  
*Gradual Separation*

Are you and your child ready to meet new friends, participate together in fun learning activities and practice spending time apart? We will support you both as you learn to separate. Parents will discuss child development, temperament, routines, guiding behavior and separation.

Longfellow 19 Wednesdays  
Starts Feb 1 9-10:30 am

## Mindful Parenting

Ages 11-18 months  
*Gradual Separation*

In our fast-paced world, it can be difficult to take time to consider what is most important to us as parents. Together we will learn how to be more present in daily moments and interactions. Topics, concerns and questions will be viewed through a mindfulness lens. Elements of yoga will be incorporated in circle time to learn calming strategies for our toddlers.

Longfellow 18 Thursdays  
Starts Feb 2 9-10:30 am

## Smarter, Happier Baby

Ages 11-18 months  
*Gradual Separation*

Enroll in this exciting opportunity to carefully consider your interactions with your baby. You will be given a device to record your interactions and then analyze the results with a parent educator. This class will focus on increasing your skills and supporting your baby's language development.

Longfellow 19 Tuesdays  
Starts Jan 31 9:30-11:30 am

## Toddlers

Ages 12-24 months  
*Non-Separating*

Here's your chance to spend some uninterrupted time together participating in toddler-friendly activities that support growth and development. A licensed parent educator will lead a discussion with parents while other staff members continue to assist your child in exploring the classroom and all it has to offer.

Longfellow 18 Thursdays  
Starts Feb 2 11:30 am-1 pm

## Toddlers

Ages 18-24 months  
*Gradual Separation*

Are you and your toddler ready to meet new friends, participate together in fun learning adventures and practice spending time apart? We will support you and your child as you learn to separate. Parents will discuss child development, temperament, routines, guiding behavior, and separation while children continue playing and socializing in the classroom.

Kenny 19 Tuesdays  
Starts Jan 31 8:30-10:30 am

Wilder 19 Tuesdays  
Starts Jan 31 9-11 am

Wilder 16 Mondays  
Starts Feb 6 9-11 am





## Toddlers & Twos

Ages 18-36 months  
Gradual Separation

See **Toddlers: Gradual Separation** for class description.

Mona Moede	19 Tuesdays
Starts Jan 31	9:30-11:30 am
Wilder	19 Tuesdays
Starts Jan 31	11:30 am-1:30 pm
Sheridan	19 Wednesdays
Starts Feb 1	9:30-11:30 am
Kenny	19 Wednesdays
Starts Feb 1	11:30 am-1:30 pm
Kenny	18 Thursdays
Starts Feb 2	9-11 am
Sheridan	16 Saturdays
Starts Feb 4	8:30-10:30 am
Wilder	16 Saturdays
Starts Feb 4	8:30-10:30 am

## Terrific Twos

Ages 24-36 months  
Gradual Separation

See **Toddlers: Gradual Separation** for class description.

Kenny	19 Tuesdays
Starts Jan 31	11:30 am-1:30 pm
Kenny	19 Wednesdays
Starts Feb 1	9-11 am
Wilder	18 Thursdays
Starts Feb 2	9-11 am
Wilder	16 Mondays
Starts Feb 6	11:30 am-1:30 pm



## Twos & Threes

Ages 24-48 months  
Gradual Separation

A mixed-age class for two and three year olds. See **Toddlers: Gradual Separation** for class description.

Kenny	18 Thursdays
Starts Feb 2	11:30 am-1:30 pm

## Toddlers – The Feeling Behavior Connection

Ages 18-24 months  
Gradual Separation

Enjoy quality time with your toddler exploring a variety of activities that support your child's growth and learning. Parents explore development and temperament using the parenting tool 'Circle of Security.' You will learn how toddlers' display their feelings through their behaviors and how to respond using effective strategies that promote empathy and self-esteem.

Longfellow	17 Fridays
Starts Feb 3	9:30-11:30 am

## Preschool Classes

(36 months-Kindergarten enrollment)

Child must have turned 3 years old by Sept. 1, 2016.

## Preschool Science, Technology, Engineering & Math (STEM)

Classroom activities will encourage problem-solving skills and explore how things work. Parent education topics will focus on ways parents can support their future engineer. We partner with the MPS STEM program to create quality lesson plans.

Kenny	19 Tuesdays
Starts Jan 31	5:30-7:30 pm
Cityview	17 Fridays
Starts Feb 3	9:30-11:30 am

## Prime Time for Preschoolers

Children will discover a world of learning and friendship in our pre-school classroom. Parent discussion will focus on child development, temperament, discipline, school readiness and all relevant things in the life of a preschooler.

Cityview	18 Thursdays
Starts Feb 2	1-3 pm
Mona Moede	16 Mondays
Starts Feb 6	9:30-11:30 am



## High Five Preschool

MPS offers preschool for four-year-olds in 27 of our elementary schools. For more information, call Student Placement at **612.668.1840**.

# Mixed-Age Classes *(Birth-Kindergarten Enrollment)*

## Adventures in Parenting

Spend quality time with your child participating in fun learning activities. Parent education will focus on child development, school readiness, temperament, guiding behavior and sibling relationships.

Mona Moede	19 Wednesdays
Starts Feb 1	9:30-11:30 am
Sheridan	18 Thursdays
Starts Feb 2	8:30-10:30 am
Cityview	18 Thursdays
Starts Feb 2	9:30-11:30 am
Wilder	18 Thursdays
Starts Feb 2	11:30 am-1:30 pm
Sheridan	8 Saturdays
Starts Feb 4	11 am-1 pm
Kenny	16 Mondays
Starts Feb 6	12:30-2:30 pm
Kenny	16 Mondays
Starts Feb 6	5:30-7:30 pm
Sheridan	8 Saturdays
Starts Apr 15	11 am-1 pm



## Daytime Dads

*Ages 12 Months-Kindergarten Enrollment*

Spend quality time with your child learning and playing together. Parent discussion will examine personal and societal attitudes facing at-home dads along with the joys and challenges that come with the experience. Learn about child development, temperament, preparing for kindergarten and parenting.

Kenny	16 Mondays
Starts Feb 6	9:30-11:30 am

## NEW | Daytime Dads: Non-separating

*Ages 0-18 Months*

New this semester: we are offering this session for infants and early ones where dads and children do not separate.

Tuttle	19 Wednesdays
Starts Feb 1	10:30 am-12 pm

## Musical Brain Development

*Four-week sessions*

Learn how to use music to strengthen your child's brain development. In collaboration with MacPhail Center for Music, this **four-week** class will allow you and your children to explore music together. Parents will discuss how music supports social/emotional, executive function, language and literacy, and behavior development.

Wilder	4 Saturdays
Starts Feb 4	11 am-1 pm

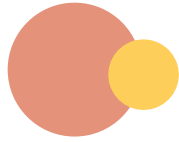
Wilder	4 Saturdays
Starts Mar 11	11 am-1 pm

Wilder	4 Saturdays
Starts Apr 15	11 am-1 pm

Wilder	4 Saturdays
Starts May 13	11 am-1 pm



# Mixed-Age Classes *(Birth-Kindergarten Enrollment)*



## Parenting Trends

Enhance your relationship with your child through participation in fun early childhood activities together. For the parent education portion of the class you will discuss articles about new trends in parenting.

Kenny 17 Fridays  
Starts Feb 3 9:30-11:30 am

Sheridan 17 Fridays  
Starts Feb 3 9:30-11:30 am

## Parenting Multiples

Are you a parent of twins or triplets? Spend time with parents of multiples and participate in fun learning activities with your children. Parent discussion will focus on child development, temperament, guiding behavior, sibling relationships and school readiness. Share the joys and challenges of parenting two, three or more!

Sheridan 18 Thursdays  
Starts Feb 2 11 am-1 pm

## Parents of Tradition

*Ages Birth-Kindergarten enrollment*

Parents of Tradition offers Native American families an opportunity to explore traditional parenting within their contemporary lifestyles and deepen their connection to culture. Parent discussion will focus on child development, school readiness, temperament, guiding behavior and sibling relationships with an understanding of traditional parenting. This class is taught in collaboration with Minneapolis Public Schools Indian Education.

Wilder 18 Thursdays  
Starts Feb 2 5-7 pm

Mona Moede 16 Mondays  
Starts Feb 6 12-2 pm

## For Families of Children with Special Needs

### Special Friends

*Ages Birth-Kindergarten enrollment*

Whether your child is receiving early intervention services or not, all are welcome. This inclusive learning environment will allow children of all skill levels to play and learn together. Parents will discuss various parenting topics as decided by the group.

Wilder 17 Fridays  
Starts Feb 3 9:30-11:30 am

### Fathering the Child with Special Needs

*Ages Birth-Kindergarten enrollment*

Join a monthly support group for fathers of children with special needs. Meets the second Monday of the month. Call Don at **612.386.7630** for more information.

Wilder 10 Mondays  
Ongoing 5:30-7:30 pm

### Raising African-American Children

*Ages Birth-Kindergarten enrollment*

Taught through an African-American lens, this class offers an opportunity for children to develop early childhood skills and support their cultural identity. Parent discussion will focus on child development, school readiness, temperament, guiding behavior and sibling relationships.

Mona Moede 19 Tuesdays  
Starts Jan 31 5-7 pm

### Early Childhood Special Education (ECSE)

Early Childhood Special Education (ECSE) serves students from birth to kindergarten identified as having a developmental delay (DD) or other disability. Screening for ECSE evaluation is available by calling **612.348.TOTS (8687)**.

ECSE services are offered in the community, homes, child care sites and schools throughout the district. Call **612.668.5100** for more information.



# Online Parent Education/Partnerships

## Partnerships

We work in partnership with other MPS and community programs to meet families where they are. Thanks to the following organizations:

### Healthcare Providers

Abbott NW Hospital  
Broadway Family Medicine Clinic  
Hennepin County Medical Center  
Native American Community Clinic  
North Memorial Hospital  
NorthPoint WIC Clinic  
South WIC Clinic

### Neighborhood Preschools

Community Childcare  
Early Wonders  
McDonald's Sunshine Tree  
PICA Headstart  
Pillsbury House  
St. John's Childcare Center  
Tayo  
Turnquist  
We Love Kids  
YWCA-Abbott

### Shelters & Housing

Common Bond  
Greater Minneapolis Crisis Nursery  
St. Anne's Place  
Tubman Family Alliance

### School Readiness

Father Project  
Hennepin County Library  
NAZ  
Way to Grow

### University of Minnesota

LENA Foundation

## Can't make it to class? No worries!

We now offer online classes packed with research-based parenting information that you can access at your convenience for the entire school year.

### Brain Development

The early childhood years are critical for healthy brain development. In this course, we will examine what science tells us about how the brain grows and what we can do to best support it. We will look at how movement is integral to the nervous system's development and we will break down what executive function skills are and why they matter.

*Online chats held from 8-9 pm on Mondays, Feb. 27 through March 27. Led by parent educator.*

*Cost: See sliding fee scale on pg. 17*

### Birth to Two: A Time of Rapid Development

Join us to explore the various developmental stages of the first two years. We will talk about attachment, sleep, nutrition, separation and how we lay the foundation for great literacy skills.

*Online chats held from 8-9 pm on Wednesdays, April 19 through May 17. Led by parent educator.*

*Cost: See sliding fee scale on pg. 17*

### No-Drama Discipline

Setting limits is challenging for all parents at various times. Explore concepts from the book, *No-Drama Discipline*, and learn principles for guiding your child's behavior in a way that is respectful to both you and your young child.

*\$30 Flat Fee*

### Teaching Empathy

Empathy is a cornerstone of healthy social and emotional development. You will have access to a variety of current, research-based articles that show you how to be an emotion coach for your young child.

*\$30 Flat Fee*



# ECFE Class Schedule by Location

## Cityview ECFE • 3350 4th St. N., Minneapolis, MN 55412 • 612.668.2297

MONDAY	TUESDAY	WEDNESDAY	THURSDAY	FRIDAY	SATURDAY
<b>Latino Smarter, Happier Babies</b> <i>(18-30 Months)</i> <i>Gradual Separation</i> 9:30-11:30 am			<b>Adventures in Parenting</b> <i>(Birth to Kindergarten Enrollment)</i> 9:30-11:30 am	<b>Preschool STEM–Science, Technology, Engineering &amp; Math</b> <i>(36 months to Kindergarten Enrollment)</i> 9:30-11:30 am	
			<b>Prime Time for Preschoolers</b> <i>(36 Months to Kindergarten Enrollment)</i> 1-3 pm		

## Hmong International Academy • 1501 30th Ave. N., Minneapolis, MN 55411 • 612.668.2250

MONDAY	TUESDAY	WEDNESDAY	THURSDAY	FRIDAY	SATURDAY
		<b>Hmong Parenting</b> <i>(Birth to Kindergarten Enrollment)</i> 5-7 pm			

## Kenny Community ECFE • 5720 Emerson Ave. S., Minneapolis, MN 55419 • 612.668.3347

MONDAY	TUESDAY	WEDNESDAY	THURSDAY	FRIDAY	SATURDAY
<b>Daytime Dads</b> <i>(12 Months to Kindergarten Enrollment)</i> 9:30-11:30 am	<b>Toddlers</b> <i>(18-24 Months)</i> <i>Gradual Separation</i> 8:30-10:30 am	<b>Terrific Twos</b> <i>(24-36 Months)</i> <i>Gradual Separation</i> 9-11 am	<b>Toddlers &amp; Twos</b> <i>(18-36 Months)</i> <i>Gradual Separation</i> 9-11 am	<b>Parenting Trends</b> <i>(Birth to Kindergarten Enrollment)</i> 9:30-11:30 am	
<b>Adventures in Parenting</b> <i>(Birth to Kindergarten Enrollment)</i> 12:30-2:30 pm	<b>Terrific Twos</b> <i>(24-36 Months)</i> <i>Gradual Separation</i> 11:30 am-1:30 pm	<b>Toddlers &amp; Twos</b> <i>(18-36 Months)</i> <i>Gradual Separation</i> 11:30 am-1:30 pm	<b>Twos &amp; Threes</b> <i>(24-48 Months)</i> <i>Gradual Separation</i> 11:30 am-1:30 pm		
<b>Adventures in Parenting</b> <i>(Birth to Kindergarten Enrollment)</i> 5:30-7:30 pm	<b>Preschool STEM–Science, Technology, Engineering &amp; Math</b> <i>(36 months to Kindergarten Enrollment)</i> 5:30-7:30 pm				

## Online Classes • Classes with online chat are listed below. See page 12 for all our online classes.

MONDAY	TUESDAY	WEDNESDAY	THURSDAY	FRIDAY	SATURDAY
<b>Brain Development</b> <i>(Birth to Kindergarten Enrollment)</i> 8-9 pm Feb 27 to Mar 27		<b>Birth to Two: A Time of Rapid Development</b> <i>(Birth to Kindergarten Enrollment)</i> 8-9 pm Apr 19 to May 17			

# ECFE Class Schedule by Location

## Longfellow ECFE • 3017 E. 31st St., Minneapolis, MN 55406 • 612.668.4759

MONDAY	TUESDAY	WEDNESDAY	THURSDAY	FRIDAY	SATURDAY
	<b>Smarter, Happier Baby</b> <i>(11-18 Months)</i> <b>Gradual Separation</b> 9:30-11:30 am	<b>Early Ones</b> <i>(11-18 months)</i> <b>Gradual Separation</b> 9-10:30 am	<b>Mindful Parenting</b> <i>(11-18 months)</i> <b>Gradual Separation</b> 9-10:30 am	<b>Toddler Feeling/ Behavior Connection</b> <i>(18-24 Months)</i> <b>Gradual Separation</b> 9:30-11:30 am	<b>Incredible Infants</b> <i>(5-11 Months)</i> <b>Non-Separating</b> 9-10:30 am
		<b>Incredible Infants</b> <i>(5-11 Months)</i> <b>Non-Separating</b> 11 am-12:30 pm	<b>Toddlers</b> <i>(12-24 Months)</i> <b>Non-Separating</b> 11:30 am-1 pm		<b>New Parent Connection</b> <i>(Birth-4 Months)</i> <b>Non-Separating</b> 11 am-12:30 pm
	<b>New Parent Connection</b> <i>(Birth-4 Months)</i> <b>Non-Separating</b> 1:30-3 pm	<b>Early Ones</b> <i>(11-18 months)</i> <b>Non-Separating</b> 3-4:30 pm	<b>Incredible Infants</b> <i>(5-11 Months)</i> <b>Non-Separating</b> 3:30-5 pm		

## Mona Moede ECFE • 2406 Girard Ave. N., Minneapolis, MN 55411 • 612.668.2155

MONDAY	TUESDAY	WEDNESDAY	THURSDAY	FRIDAY	SATURDAY
<b>Primetime for Preschoolers</b> <i>(36 Months to Kindergarten Enrollment)</i> 9:30-11:30 am	<b>Toddlers &amp; Twos</b> <i>(18-36 Months)</i> <b>Gradual Separation</b> 9:30-11:30 am	<b>Adventures in Parenting</b> <i>(Birth to Kindergarten Enrollment)</i> 9:30-11:30 am	<b>East African Adventures in Parenting—Somali</b> <i>(Birth to Kindergarten Enrollment)</i> 9:30-11:30 am	<b>East African Adventures in Parenting—Oromo</b> <i>(Birth to Kindergarten Enrollment)</i> 9:30-11:30 am	
<b>Parents of Tradition</b> <i>(Birth to Kindergarten Enrollment)</i> 12-2 pm					
	<b>Raising African-American Children</b> <i>(Birth to Kindergarten Enrollment)</i> 5-7 pm				

## Sheridan ECFE • 1201 University Ave. N.E., Minneapolis, MN 55413 • 612.668.1174

MONDAY	TUESDAY	WEDNESDAY	THURSDAY	FRIDAY	SATURDAY
	<b>Latino Adventures in Parenting</b> <i>(Birth to Kindergarten Enrollment)</i> 10 am-12 pm	<b>Toddlers &amp; Twos</b> <i>(18-36 Months)</i> <b>Gradual Separation</b> 9:30-11:30 am	<b>Adventures in Parenting</b> <i>(Birth to Kindergarten Enrollment)</i> 8:30-10:30 am	<b>Parenting Trends</b> <i>(Birth to Kindergarten Enrollment)</i> 9:30-11:30 am	<b>Toddlers &amp; Twos</b> <i>(18-36 Months)</i> <b>Gradual Separation</b> 8:30-10:30 am
	<b>Latino Adventures in Parenting</b> <i>(Birth to Kindergarten Enrollment)</i> 1-3 pm	<b>New Parent Connection</b> <i>(Birth-4 Months)</i> <b>Non-Separating</b> 1-2:30 pm	<b>Multiples</b> <i>(Birth to Kindergarten Enrollment)</i> 11 am-1 pm		<b>Adventures in Parenting</b> <i>(Birth to Kindergarten Enrollment)</i> 11 am-1 pm
	<b>Latino Adventures in Parenting</b> <i>(Birth to Kindergarten Enrollment)</i> 5-7 pm	<b>Incredible Infants</b> <i>(5-11 Months)</i> <b>Non-Separating</b> 3:30-5 pm			

# SEMESTER 2: Winter/Spring 2017

**Tuttle ECFE** • 1042 18th Ave. S.E. , Minneapolis, MN 55414 • 612.668.2127

MONDAY	TUESDAY	WEDNESDAY	THURSDAY	FRIDAY	SATURDAY
		<b>Early Ones</b> <i>(11-18 months)</i> <b>Non-Separating</b> <b>8:30-10 am</b>		<b>Infant Class with Yoga</b> <i>(1-8 Months)</i> <b>Non-Separating</b> <b>10:11:30 am</b>	
		<b>Daytime Dads</b> <i>(0-18 Months)</i> <b>Non-Separating</b> <b>10:30 am-12 pm</b>			

**Wilder ECFE** • 3345 Chicago Ave. S., Minneapolis, MN 55407 • 612.668.4140

MONDAY	TUESDAY	WEDNESDAY	THURSDAY	FRIDAY	SATURDAY
<b>East African Adventures in Parenting–Oromo/Amharic</b> <i>(Birth to Kindergarten Enrollment)</i> <b>9-11 am</b>	<b>Toddlers</b> <i>(18-24 Months)</i> <b>Gradual Separation</b> <b>9-11 am</b>	<b>East African Adventures in Parenting–Oromo/Amharic</b> <i>(Birth to Kindergarten Enrollment)</i> <b>9-11 pm</b>	<b>Terrific Twos</b> <i>(24–36 Months)</i> <b>Gradual Separation</b> <b>9-11 am</b>	<b>Latino Adventures in Parenting</b> <i>(Birth to Kindergarten Enrollment)</i> <b>9:30-11:30 am</b>	<b>Toddlers &amp; Twos</b> <i>(18–36 Months)</i> <b>Gradual Separation</b> <b>8:30-10:30 am</b>
<b>Toddlers</b> <i>(18-24 Months)</i> <b>Gradual Separation</b> <b>9-11 am</b>		<b>Latino Special Friends</b> <i>(Birth to Kindergarten Enrollment)</i> <b>9:30-11:30 am</b>	<b>Latino Toddlers &amp; Twos</b> <i>(12-24 Months)</i> <b>9:30-11:30 am</b>	<b>Special Friends</b> <i>(Birth to Kindergarten Enrollment)</i> <b>9:30-11:30 am</b>	
<b>East African Adventures in Parenting–Oromo/Amharic</b> <i>(Birth to Kindergarten Enrollment)</i> <b>11:30 am-1:30 pm</b>	<b>Toddlers &amp; Twos</b> <i>(18-36 Months)</i> <b>Gradual Separation</b> <b>11:30 am-1:30 pm</b>	<b>East African Adventures in Parenting–Somali</b> <i>(Birth to Kindergarten Enrollment)</i> <b>11:30 am-1:30 pm</b>	<b>Adventures in Parenting</b> <i>(Birth to Kindergarten Enrollment)</i> <b>11:30 am-1:30 pm</b>		<b>Musical Brain Development</b> <i>(Birth to Kindergarten Enrollment)</i> <b>11 am-1 pm</b>
<b>Terrific Twos</b> <i>(24-36 Months)</i> <b>Gradual Separation</b> <b>11:30 am-1:30 pm</b>	<b>Latino Preschool STEM–Science, Technology, Engineering &amp; Math</b> <i>(36 Months to Kindergarten Enrollment)</i> <b>2-4 pm</b>	<b>Latino Primetime for Preschoolers</b> <i>(36 months to Kindergarten Enrollment)</i> <b>1-3 pm</b>	<b>Latino Adventures in Parenting</b> <i>(Birth to Kindergarten Enrollment)</i> <b>1-3 pm</b>		
	<b>Early Ones</b> <i>(11-18 Months)</i> <b>Non-Separating</b> <b>3:30-5 pm</b>				
<b>Fathering a Child with Special Needs</b> <i>(Birth to Kindergarten Enrollment)</i> <b>5:30-7:30 pm</b>	<b>Incredible Infants</b> <i>(0-11 Months)</i> <b>Non-Separating</b> <b>5:30-7 pm</b>	<b>Latino Adventures in Parenting</b> <i>(Birth to Kindergarten Enrollment)</i> <b>4-6 pm</b>	<b>Parents of Tradition</b> <i>(Birth to Kindergarten Enrollment)</i> <b>5-7 pm</b>		

# ECFE Class Application Information

## Applying for an ECFE class is as easy as A, B, C... !

### A. Complete an application form.

If applying online, visit: [ecfe.mpls.k12.mn.us](http://ecfe.mpls.k12.mn.us). If mailing in application, submit the form on page 19. When applying, choose the class you'd like to take, and then make a second choice – just in case your first choice is unavailable. Application continues until classes are full.

### B. Submit your application online, by fax or mail.

Fax completed application form to **612.668.2135**, or mail to: **Minneapolis ECFE, 2410 Girard Ave. N., Minneapolis, MN 55411**

### C. Application completed.

ECFE will notify you of your enrollment status at least two weeks prior to the class start date. **If you paid by credit card, your card will be charged when you are placed in a class.**

**Semester 2 class applications must be submitted online or received by Jan. 8, 2017 to be part of the lottery.** After the lottery is run, the application process will reopen Jan. 11 and stay open until classes are filled.

**DO NOT send any fees with your application.** You will be billed after you have been accepted in a class. **Application does not guarantee class enrollment.** You will be notified by mail or email of your enrollment status at least two weeks prior to the class start date.

Upon enrollment notification, class payment, **birth certificate(s) and current immunization forms** are due for your child(ren). If you paid by credit card, your card will be charged at this time.

**Each parent will be limited to one class per semester.** If space allows, after first month of classes, parents may be able to attend more than one class. Every effort is made to serve as many families as possible.

**Did the class you want fill up?** Apply for it and you will be put on a waitlist. If you are not placed into a class during Semester 2, you will be given priority when you apply for Semester 1 in the fall.



### Additional information

**Accessibility:** If you need information or assistance, contact the ECFE Administrative Office at **612.668.2127**. For further information, call Community Education Disability Access Services at **612.668.3950**.

**Transportation:** Transportation is provided on a limited basis. Call **612.668.2126** for more information.

**School closings:** ECFE is closed and classes are not held when Minneapolis Public Schools are closed for holidays or bad weather.

**For fee assistance or questions, please call 612.668.2127.**

### WINTER/SPRING 2017 Important dates to know:

Online & mail-in application  
Dec. 27 through Jan. 8

Lottery runs Jan. 9

Application reopens Jan. 11  
and runs until classes are filled

Semester 2 classes run  
Jan. 31-June 14



## Sliding fee scale for ECFE 2016-17

Annual Family Income Per Semester	Separating Per Semester (16-19 weeks)	Non-Separating Per Semester (16-19 weeks)	Infant and Half-Semester (8-10 weeks)	Online Classes	4-Week Classes
\$0-9,999	\$ 20.00	\$ 15.00	\$ 10.00	\$ 3.50	\$ 5.00
\$10,000-19,999	\$ 55.00	\$ 40.00	\$ 28.00	\$ 8.00	\$14.00
\$20,000-29,999	\$ 90.00	\$ 65.00	\$ 45.00	\$14.00	\$22.00
\$30,000-49,999	\$125.00	\$ 95.00	\$ 63.00	\$19.00	\$31.00
\$50,000-69,999	\$160.00	\$120.00	\$ 80.00	\$25.00	\$40.00
\$70,000-89,999	\$200.00	\$150.00	\$100.00	\$38.00	\$50.00
\$90,000-119,999	\$250.00	\$190.00	\$125.00	\$44.00	\$62.00
\$120,000-139,999	\$300.00	\$225.00	\$150.00	\$50.00	\$75.00
\$140,000-159,999	\$340.00	\$250.00	\$170.00	\$57.00	\$85.00
\$160,000+	\$375.00	\$280.00	\$188.00	\$63.00	\$94.00

### Policies

- All information is confidential.
- A 10% surcharge will be applied to fees for families who are not Minneapolis residents.
- Class refunds: Full refund is made if cancellation occurs before class begins. After first class, refund will be prorated + \$12 processing fee. **No refunds will be issued after the third week of class.**
- Classes may be canceled due to lack of enrollment or weather conditions.
- Any family who enrolls and does not attend for three consecutive classes without notifying the staff will forfeit their place in class. Families on the waiting list will be offered these classes.
- **A copy of your child's birth certificate and current immunization records are required by the first class session.** We follow the Minneapolis Public School "No Shots, No School" policy. Immunization forms can be found online at [health.state.mn.us/immunize](http://health.state.mn.us/immunize).



# ECFE Class Locations

## ECFE Class Locations

**1. Cityview ECFE**  
3350 4th St. N.  
Minneapolis, MN 55412  
**612.668.2297**

**2. Hmong International Academy (HIA)**  
1501 30th Ave. N.  
Minneapolis, MN 55412  
**612.668.2250**

**3. Kenny ECFE**  
5720 Emerson Ave. S.  
Minneapolis, MN 55419  
**612.668.3347**

**4. Longfellow ECFE**  
3017 E. 31st St.  
Minneapolis, MN 55406  
**612.668.4759**

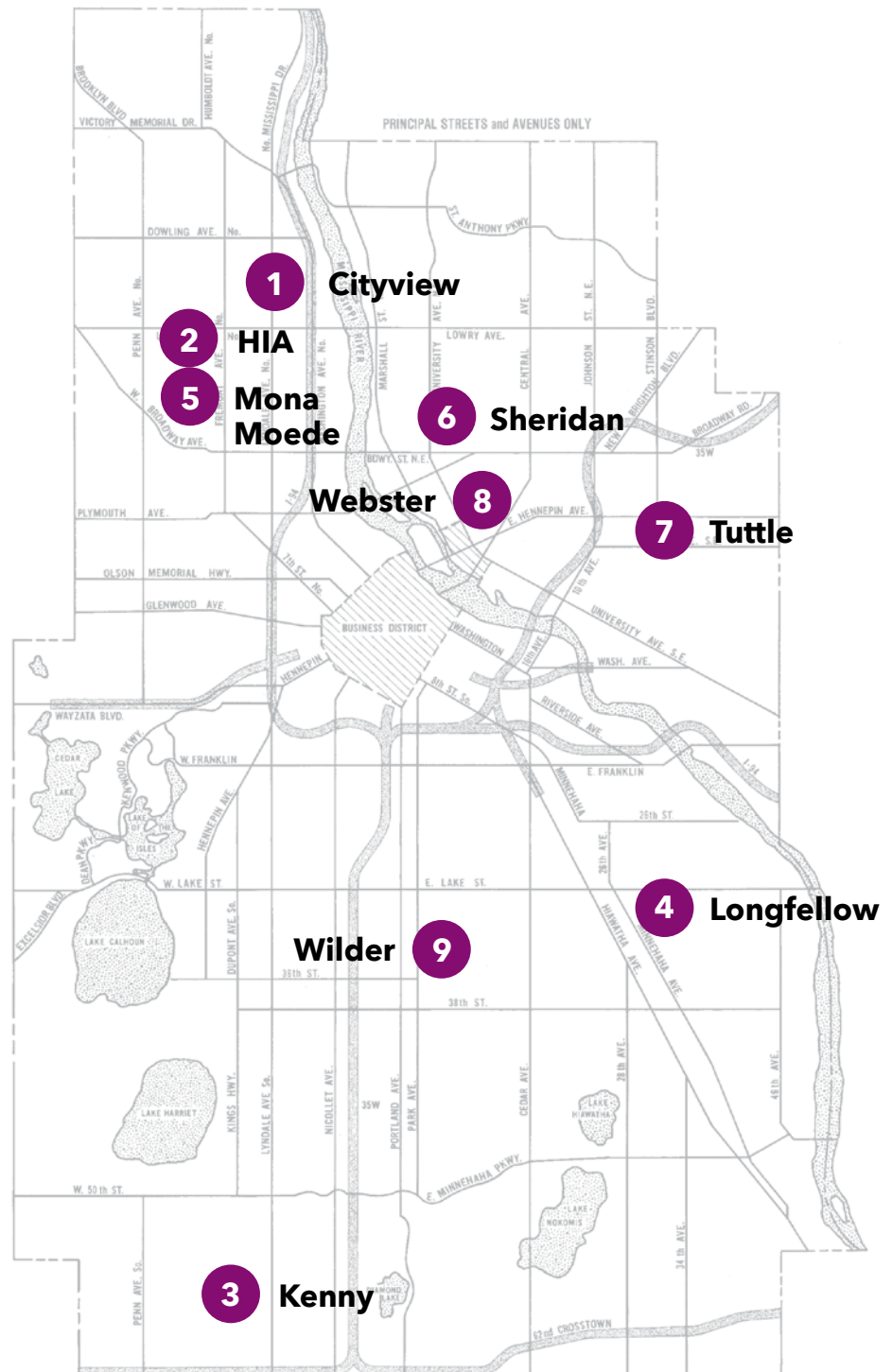
**5. Mona Moede ECFE**  
2406 Girard Ave. N.  
Minneapolis, MN 55411  
**612.668.2155**

**6. Sheridan ECFE**  
1201 University Ave. N.E.  
Minneapolis, MN 55413  
**612.668.1174**

**7. Tuttle ECFE**  
1042 18th Ave. S.  
Minneapolis, MN 55414  
**612.668.2127**

**8. Webster–Alphabet Soup**  
425 5th St. N.E.  
Minneapolis, MN 55413  
**612.668.1210**

**9. Wilder ECFE**  
3345 Chicago Ave. S.  
Minneapolis, MN 55407  
**612.668.4140**



## ECFE Application Form

### Winter/Spring 2017–Semester 2 Classes

#### Parent(s)/Guardian(s) Attending Class

Please print clearly.

_____	_____
FIRST NAME	LAST NAME
_____	_____
FIRST NAME	LAST NAME
_____	
STREET ADDRESS	
_____	_____
CITY, STATE, ZIP	EMAIL ADDRESS
( _____ ) _____ - _____	( _____ ) _____ - _____
HOME PHONE	WORK PHONE
( _____ ) _____ - _____	_____
EMERGENCY PHONE	REFERRED BY (agency or person)

#### Class Choice

1st Choice: \_\_\_\_\_

Day & Time: \_\_\_\_\_ Location: \_\_\_\_\_

2nd Choice: \_\_\_\_\_

Day & Time: \_\_\_\_\_ Location: \_\_\_\_\_

#### Children Attending Class

Please list all of the children and their dates of birth—including infants—that you will be bringing to class. Please list any additional children on a separate sheet of paper.

Child #1: \_\_\_\_\_  M  F  
 FIRST NAME LAST NAME DATE OF BIRTH GENDER

Child #2: \_\_\_\_\_  M  F  
 FIRST NAME LAST NAME DATE OF BIRTH GENDER

Child #3: \_\_\_\_\_  M  F  
 FIRST NAME LAST NAME DATE OF BIRTH GENDER

Child #4: \_\_\_\_\_  M  F  
 FIRST NAME LAST NAME DATE OF BIRTH GENDER

#### Check child(ren)'s primary race:

Asian  Black  Hispanic  Native American  Pacific Islander  White

#### Payment Information

Based on the sliding fee scale (see page 17), please indicate the amount you are able to pay. If you need help with a payment plan or have questions, please call 612.668.2127. Class payment is due once placed in a class.

I can pay \$ \_\_\_\_\_ towards my class fee.

#### Additional Information

Is your child receiving MPS special education services or other special services?

Yes  No

If yes, please specify:

IEP  IFSP  IIIP

Other: \_\_\_\_\_

Do you need transportation?

Yes  No

Primary language spoken at home:

\_\_\_\_\_

#### Mail or fax completed application form to:

**Minneapolis ECFE**  
 2410 Girard Ave. N.  
 Minneapolis, MN 55411

**Fax:** 612.668.2135

**Semester 2 applications must be received by Jan. 8, 2017 to be included in the lottery.**

**Save time—apply online!**

**[ecfe.mpls.k12.mn.us](http://ecfe.mpls.k12.mn.us)**

## Minneapolis ECFE

*Building blocks for school success*

2410 Girard Ave. N.  
Minneapolis, MN 55411

Phone: 612.668.2127  
Fax: 612.668.2135

NON-PROFIT  
U.S. POSTAGE  
PAID  
TWIN CITIES, MN  
PERMIT NO. 2515



# STRONG

# is little ones ready to learn.



## Minneapolis ECFE 2017 Class Schedule

### WINTER/SPRING 2017

#### Online & Mail-in Application

Dec. 27, 2016 - Jan. 8, 2017

Lottery runs Jan. 9, 2017

#### Semester 2 Classes:

Jan. 31-June 14, 2017

#### No class dates:

Feb. 18, 20      March 31

April 3-8      May 27, 29

### FALL/WINTER 2017-18

Watch for our Semester 1  
Catalog in June 2017

#### Online & Mail-in Application

July 10-26, 2017

#### Semester 1 Classes start:

Aug. 30, 2017



MINNEAPOLIS  
PUBLIC SCHOOLS  
Urban Education. Global Citizens.